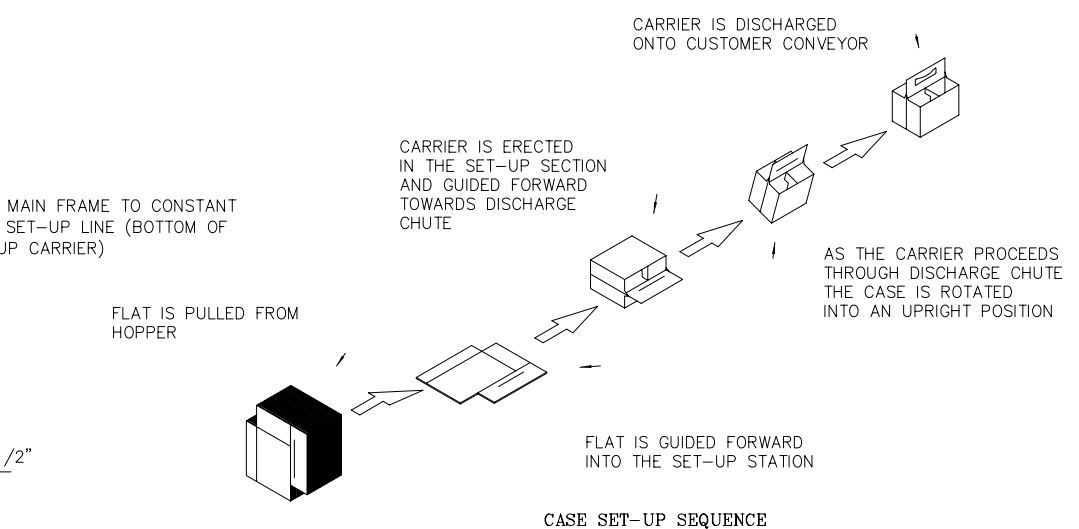
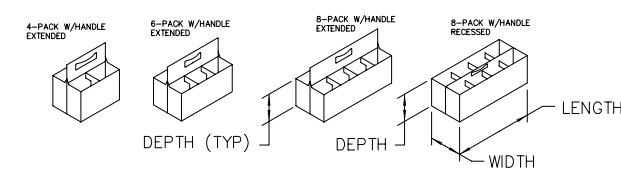


PLAN VIEW



CASE SET-UP SEQUENCE

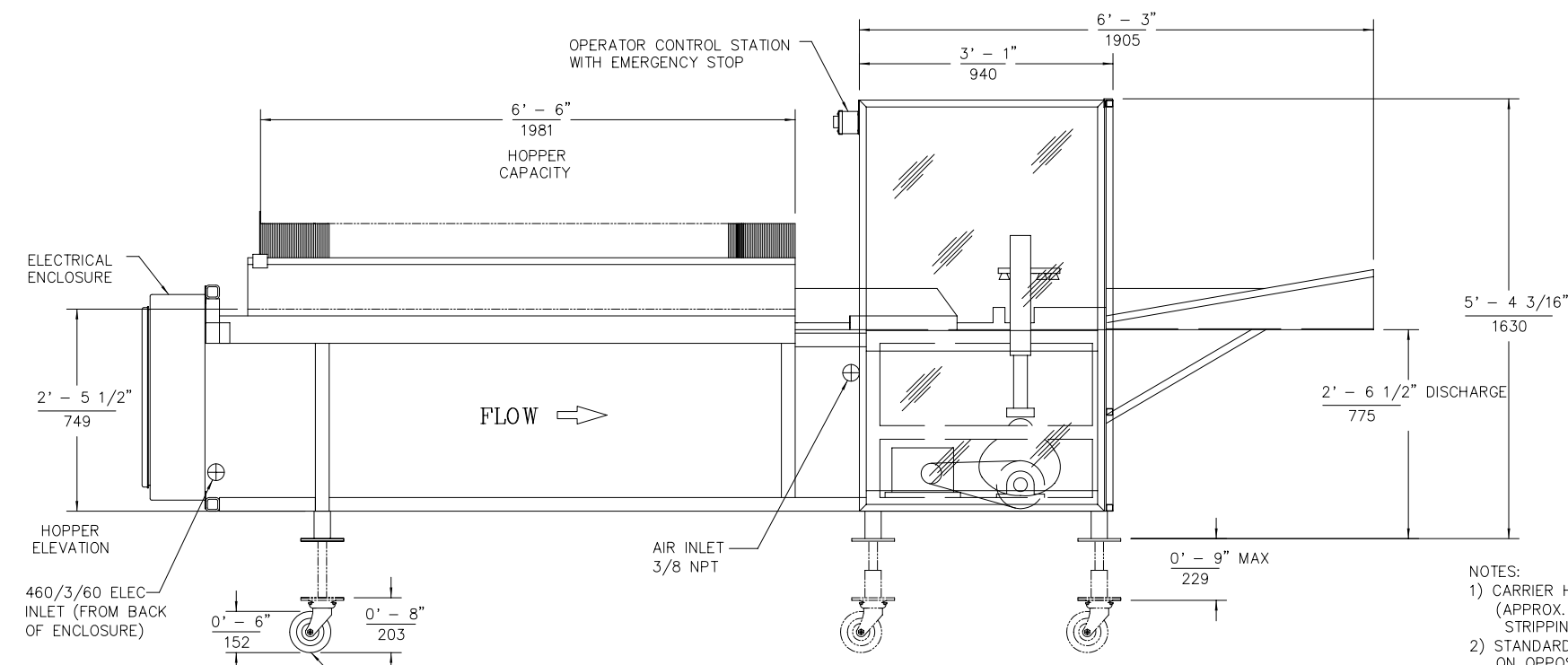


KNOCK-DOWN DIMENSIONS		
	MIN.	MAX.
LENGTH	9.50(241)	14.00(356)
WIDTH	7.50(191)	13.00(330)

NOTE: 7.63(194) MINIMUM LENGTH POSSIBLE ON THE 4-PACK WITH CHANGE PARTS. SPECIAL ENGINEERING REQUIRED FOR SMALLER DIMENSIONS.

SET-UP DIMENSIONS		
	MIN.	MAX.
LENGTH	6.75(172)	11.25(286)
WIDTH	4.75(121)	5.50(140)
DEPTH	2.50(64)	5.75(146)

NOTE: 5.00(127) MINIMUM LENGTH POSSIBLE ON THE 4-PACK WITH CHANGE PARTS. SPECIAL ENGINEERING REQUIRED FOR SMALLER DIMENSIONS.



ELEVATION VIEW

MACHINE SPECIFICATIONS

MACHINE SPEED : MAXIMUM 70* CARRIERS PER MINUTE (SIX AND EIGHT PACKS)
 MAXIMUM 63* CARRIERS PER MINUTE (4 PACKS)
 MINIMUM 40 CARRIERS PER MINUTE (ALL STYLES)
 *DEPENDS UPON CARRIER SIZE, STYLE AND CONFIGURATION

HOPPER CAPACITY: 6'-6"(1981) OR APPROXIMATELY 600 STANDARD CARRIERS

UTILITY REQUIREMENTS

AIR REQUIREMENTS : 3.119 SCFM @ 60 PSI (.087 m³/MIN @ 413.4 KPa)
 FOR CAM OPERATED VALVE
 4.038 SCFM @ 60 PSI (.113 m³/MIN @ 413.4 KPa)
 FOR CONTINUOUS FLOW
 (FLOWS ASSUME HAND VALVE IS HALF OPEN. DOUBLE FLOWS FOR FULL OPEN.)

ELECTRICAL REQUIREMENTS : (230/460 VOLTS, 3 PHASE, 60 Hz STANDARD)
 1096 WATTS MAXIMUM @60 CYCLES STANDARD
 1096 WATTS MAXIMUM @50 CYCLES

SPECIFIC CUSTOMER INFORMATION

CUSTOMER: _____
 CUSTOMER P.O. NO. _____
 SALES ORDER NO. _____
 LOCATION: _____
 MACHINE SERIAL NUMBER: _____
 OPERATING VOLTAGE: 460V/3/60
 CONTROL VOLTAGE: 120V AC
 CONTROL PANEL LOCATION: END OF HOPPER
 CUSTOMER SPEED: _____

SPECIAL NOTES: PORTABILITY AND CENTRAL LUBE.

CERTIFIED BY: _____ DATE: _____
CUSTOMER ACCEPTANCE OF SPECIFICATIONS
 ACCEPTED BY: _____ DATE: _____

- NOTES:
- CARRIER HOPPER DOES NOT INCLUDE A 7.00(178) PRIME (APPROX. 50 CARRIERS) TO MAINTAIN POSITIVE STRIPPING FROM THE HOPPER.
 - STANDARD ELECTRICAL PANEL SHOWN, OPTIONAL LOCATION ON OPPOSITE SIDE.
 - DIMENSIONS ARE IN FOOT FRACTION INCH OVER MILLIMETERS.

PROPRIETARY
 NEITHER THIS DOCUMENT NOR THE INFORMATION CONTAINED THEREIN MAY BE REPRODUCED OR DISCLOSED TO ANYONE WITHOUT THE WRITTEN PERMISSION OF R.A. PEARSON CO.

DATE		REVISION		ECN NO.		REV. BY		CHKD BY	
3-Nov-2000		UPDATED FOR NEW GUARD PACKAGE		N/A		JLC		DR	

8120 WEST SUNSET HIGHWAY
 SPOKANE, WASHINGTON 99224
 WWW.PEARSONPKG.COM

P-E-A-R-S-O-N PACKAGING SYSTEMS

TITLE: D1001-01 Carrier Erector

DR. JLC 29-Nov-2000 DWG NO. D263983

SCALE 1/4" = 1'-0" SHEET L L